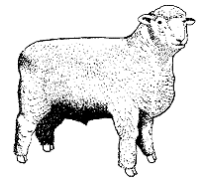


## **MEAT BREEDS SHEEP**



**Entry Fee:** \$2 per sheep (this includes bedding) to be paid to the Chief Steward on the day of the show.

**Entries Close:** By phone with the Chief Steward Thursday 4<sup>th</sup> March 2010

**Prize Money:** In addition to ribbons for the first three places of each class, there are special prizes if insufficient entries are received, some special prizes may not be awarded. This is at the discretion of the Chief Steward.

**Chief Steward:** Bianca Stanford 0429 033 844

- Conditions:**
1. All sheep are to be penned by 9.30am Saturday 6th March, ready for judging at 10am
  2. All sheep must be the bona-fide property of the exhibitor. Sheep entered in the milk teeth only classes must be also be bred by the exhibitor.
  3. All sheep must be registered with, and according to the Rules of, the relevant societies.
  4. Sheep in shorn classes to be evenly shorn & not carry more than 4cm in Border Leicester classes and not more than 2cm in Short Wool classes.
  5. Limit of two sheep per exhibitor per class, excluding school entries.
  6. Sheep groups are to come from general classes.
  7. Brucellosis - All sheep shall come from accredited free flocks. A photocopy of Accreditation Certificate MUST be given to the Chief Steward.
  8. Footrot - All sheep shall come from accredited free flocks or owner declaration flocks. Certificate must be shown if requested.
  9. Ovine Johne's Disease - Sheep must be from flocks not under suspicion of OJD AND from flocks MN1 or better. A photocopy of Accreditation Certificate MUST be given to the to the Chief Steward: OR from MN1 equivalent tested flocks within the last 12 months. A photocopy of a Veterinary Certificate MUST be given to the Chief Steward OR from a flock with a negative check test within the last 12 months. A photocopy of Veterinary Certificate MUST be given to the Chief Steward. All sheep from the Residual Zone must be from flocks with MN1 status or better.

### **PART ONE — JUNIOR HANDLER**

*Judging of these classes will be ongoing during the day*

- 15101 Junior Handler- under 13 yrs of age  
15102 Junior Handler - 13 yrs & under 18 yrs of age

### **PART TWO - WHITE SUFFOLK**

- 15201 Ram - milk teeth, woolly  
15202 Ram - milk teeth, shorn  
15203 Ram -2 teeth only  
15204 Ram -4 teeth and over  
15205 Pen of 2 Rams, milk teeth only

#### **Champion White Suffolk Ram**

- 15206 Ewe - milk teeth, woolly  
15207 Ewe - milk teeth, shorn  
15208 Ewe - 2 teeth only  
15209 Ewe -4 teeth and over  
15210 Pen of 2 Ewes, milk teeth only

#### **Champion White Suffolk Ewe**

- 15211 Group - 1 Ram and 2 Ewes, milk teeth only

### **PART THREE - POLL DORSET**

- 15301 Ram - milk teeth, woolly  
15302 Ram - milk teeth, shorn  
15303 Ram - born after 1st August 2009  
15304 Ram -2 teeth only  
15305 Ram -4 teeth and over  
15306 Pen of 2 Rams, milk teeth only

#### **Champion Poll Dorset Ram**

- 15307 Ewe - milk teeth, woolly  
15308 Ewe - milk teeth, shorn  
15309 Ewe - born after 1st August 2009

### **PART THREE - POLL DORSET Continued**

- 15310 Ewe-2 teeth only  
15311 Ewe - 4 teeth and over  
15312 Pen of 2 Ewes, milk teeth only

#### **Champion Poll Dorset Ewe**

- 15313 Group - 1 Ram and 2 Ewes, milk teeth only

#### **Best Group of 3 Poll Dorset Rams**

#### **Poll Dorset Perpetual Shield**

#### **Most Successful Poll Dorset Exhibitor**

### **PART FOUR - SUFFOLKS**

- 15401 Ram - milk teeth, woolly  
15402 Ram - milk teeth, shorn  
15403 Ram - 2 teeth only  
15404 Ram -4 teeth and over  
15405 Pen of 2 Rams, milk teeth only

#### **Champion Suffolk Ram**

#### ***Sponsored by Landmark***

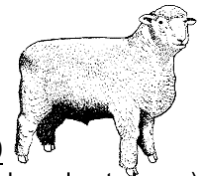
- 15406 Ewe - milk teeth, woolly  
15407 Ewe - milk teeth, shorn  
15408 Ewe - 2 teeth only  
15409 Ewe -4 teeth and over  
15410 Pen of 2 Ewes, milk teeth only

#### **Champion Suffolk Ewe**

#### ***Sponsored by Blowes Menswear***

- 15411 Group - 1 Ram & 2 Ewes, milk teeth only

## **MEAT BREEDS SHEEP**



### **PART FIVE - TEXELS**

- 15501 Ram - milk teeth, woolly
- 15502 Ram - milk teeth, shorn
- 15503 Ram - 2 teeth only
- 15504 Ram -4 teeth and over
- 15505 Pen of 2 Rams, milk teeth only

#### **Champion Texel Ram**

*Sponsored by Blowes Menswear*

- 15506 Ewe - milk teeth, woolly
- 15507 Ewe - milk teeth, shorn
- 15508 Ewe -2 teeth only
- 15509 Ewe -4 teeth and over
- 15510 Pen of 2 Ewes, milk teeth only

#### **Champion Texel Ewe**

- 15511 Group - 1Ram and 2 Ewes, milk teeth only

### **PART SEVEN - BORDER LEICESTERS**

- 15601 Ram - under 1 year, milk teeth, woolly
- 15602 Ram - under 1 year, milk teeth, shorn
- 15603 Ram - 1 year and under 2 years, woolly
- 15604 Ram - 1 year and under 2 years, shorn
- 15605 Ram - 2 years and over, woolly
- 15606 Ram -2 years and over, shorn
- 15607 Pen of 2 Rams, milk teeth only

#### **Champion Border Leicester Ram**

*Sponsored by Blowes Menswear*

- 15608 Ewe - under 1 year, milk teeth, woolly
- 15609 Ewe - under 1 year, milk teeth, shorn
- 15610 Ewe - 1 year and under 2 years, woolly
- 15611 Ewe - 1 year and under 2 years, shorn
- 15612 Ewe-2 years and over, woolly
- 15613 Ewe - 2 years and over, shorn
- 15614 Pen of 2 Ewes, milk teeth only

#### **Champion Border Leicester Ewe**

*Sponsored by Telstra Licensed Shop*

- 15615 Group - 1 Ram and 2 Ewes, milk teeth only
- Best Group of 3 Border Leicester Sheep

#### **C.J Hundy Perpetual Shield**

*Sponsored by Landmark*

### **PART EIGHT — ANY OTHER BREED**

(These classes apply for any individual breed not shown)

- 15701 Ram - milk teeth, woolly
- 15702 Ram - milk teeth, shorn
- 15703 Ram -2 teeth only
- 15704 Ram -4 teeth and over
- 15705 Pen of 2 Rams, milk teeth only

#### **Champion Any Other Breed Ram**

*Sponsored by Mudjee Vet Hospital*

- 15706 Ewe - milk teeth, woolly
- 15707 Ewe - milk teeth, shorn
- 15708 Ewe -2 teeth only
- 15709 Ewe -4 teeth and over
- 15710 Pen of 2 Ewes, milk teeth only

#### **Champion Any Other Breed Ewe**

*Sponsored by Mudjee Vet Hospital*

- 15711 Group - 1 Ram and 2 Ewes, milk teeth

- 15801 Best Lamb Group

#### **Ross Lear Perpetual Shield**

*Sponsored by Telstra*

**Supreme Exhibit - sponsored by Landmark**

**Supreme Interbreed Ram**

**Supreme Interbreed Ewe**

**Supreme Interbreed Group (Milk Teeth)**

**Most Successful Exhibitor**

*Sponsored by Mudjee Vet Hospital*

**MUDJEE  
VETERINARY  
HOSPITAL**

*Branches in  
Gulgong &  
Rylstone*

Phone 6372 2105      104 Market St  
Fax 6372 3676      Mudgee

**BLOWES**  
**menswear**  
THE SPECIALISTS

**AKUBRA**  
**RM WILLIAMS**  
**POLO RALPH LAUREN**

**MUDJEE**  
18/20 Church St  
6372 1024

**ORANGE    BATHURST**  
204 Summer St    64 William St  
6382 8888      6331 4122

**LANDMARK**

*look to us*

**Continuing to support  
The Mudgee Show**

**10 Sydney Rd, Mudgee**  
Phone **6372 1311** Fax **6372 2422**