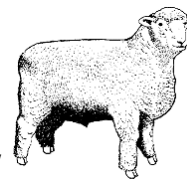


## **PRIME LAMB COMPETITION**



**Entry Fee:** \$5 per pen (This includes bedding). To be paid to the Chief Steward on day  
**Entries Close:** By phone with the Chief Steward Thursday 4th March 2010  
**Prize Money:** In addition to ribbons for the first three places of each class, there are special prizes if insufficient entries are received, some special prizes may not be awarded. This is at the discretion of the Chief Steward.

**Chief Steward:** Bianca Stanford 0429 033 844

**Conditions:**

1. All sheep to be penned by 8.30am, ready for weighing and judging at 9a
2. Exhibits will be penned in portable pens away from stud sheep.
3. All entries will be weighed on the morning before judging.
4. All sheep must come from flocks, which are disease free.
5. Pet sheep are not eligible to compete in any class.
6. All lambs shall have milk teeth only.
7. No sheep to have more that 12 months wool.

15922 Three crossbred lambs to weigh less than 45kg live weight  
15923 Three crossbred lambs to weigh more than 45kg live weight

***Proudly sponsored by NSW Farmers Mudgee Branch***

## **NSW Farmers Mudgee Branch**

### ***Local Contacts:***

President	John Webb	6373 3951
Secretary	Ross Mayberry	6372 6594
Area Manager	Graeme Blatch	0427 411 220

Growing  
the Business  
of Farming



**Serving the needs of the Rural Sector**

**PROUD SPONSORS OF THE PRIME LAMB COMPETITION**